



GoBuds 577

True Wireless Earbuds

Get ready for MORE, for a LIFE of WOW with your all new GoBuds 577. We strongly recommend you go through this manual entirely before beginning to use the product, as it contains important technical information to ensure a seamless audio experience. It can also be referred to in times of difficulty.

### PACKAGE CONTENTS

- 1 x GoBuds 577
- 1 x Type C Charging Cable
- 1 x Charging case
- 1 x Warranty Card
- 1 x Manual
- 2x Additional Ear Muffs

### CHARGING

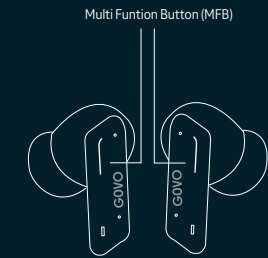
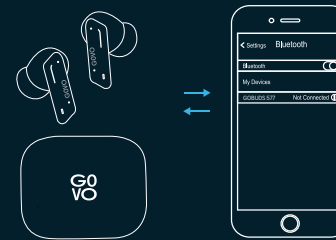
- Earbuds are partially charged. Please ensure you fully charge them before you use them for the first time.
- To charge the case, plug the one end of the charging cable into the case and the other end into a USB port.
- Red light indicates that the case is being charged. Once the red light is off, the case is fully charged.

Note: Charge the GoBuds 577 at least once in a month when they are not in use for a long time.

### PAIRING DEVICE

Follow these steps for a successful pairing:

- After opening the cover of the charging case the earbuds are automatically turned on and paired with each other.
- Red and blue light will flash alternately on the buds, indicating that they are in pairing mode.
- Select from the list of the available bluetooth devices the GoBuds 577, while keeping the earbuds close to your device.
- Earbuds indicator will flash blue light blink every 5 sec, indicating a successful connection.
- GoBuds 577 will automatically be connected to the paired device, every time you remove them from the charging case.



### MONO MODE

- Both earbuds can be used in Mono mode. More specifically, you can remove from the case either earbud and it will be paired automatically to the previously paired device.

- To switch between the earbuds, you can put the initial earbud on the case. Then take the second earbud out, and it will automatically pair.

Notes: To switch to Stereo mode, simply take out the other earbud from the case. It will automatically power on and pair with the previously used earbud, hence enabling stereo usage.

You cannot skip tracks or return to the previous tracks in Mono mode.

### SPECIFICATION

Model	GOBUDS 577
Driver size	13mm
Frequency Range	20Hz-20kHz
Sensitivity	127dB±4dB
Quad Mic ENC	Environmental Noise Cancellation
Case Battery Capacity	470mAh
Earbuds Battery Capacity	2x40mAh
Total Playtime	52 Hours
Earbud Playtime	7.2 Hours
Fast Charge for earbuds	5 mins charge for 120 mins playtime
Full Charge for case	60 Minutes
Charging Port	Type C
Input Voltage	5VDC, 1A
Water Resistance	IPX5
Bluetooth	V5.3
Transmission Dist.	10m
Gaming Mode	50ms Latency

### HOW TO USE

Power On	Open the cover of the case or Touch the L/R MFB for 3 sec
Power Off	Return the buds in the case and close the cover or Touch the L/R MFB for 6 sec
Answer call	Tap the Left or Right MFB once
End call	Tap the Left or Right MFB twice
Reject call	Tap the Left or Right MFB twice
Music play/pause	Tap the Left or Right MFB once
Previous song	Tap the Left MFB twice
Next song	Tap the Right MFB twice
Voice assistant	Tap the Left or Right MFB 3 times
Game Mode On/Off	Tap the Left or Right MFB 4 times

Note: The volume cannot be controlled via the earbuds. You may control the volume via the phone or media device

Reset: Take out the earbuds and tap the left or right MFB 5 times.

### SAFETY INSTRUCTIONS

- Please read, follow and keep these instructions. Heed all warnings on the product and in the instructions for use.
- Stop using this product immediately if it causes discomfort or pain. When using this product, it is recommended that you limit the volume to help avoid causing harm to your ears and danger resulting from being unable to hear what is going on around you.
- Keep the device out of extreme heat and humidity. Do not use the device near water, such as sinks, bathtubs, swimming pools, washing machines, tubs of water, etc.
- Observe all signs and instructions that require an electrical device or radio product to be switched off in designated areas, such as petrol/refueling stations, hospitals, blasting areas, potentially explosive atmospheres, and aircraft.
- Using earbuds while driving can distract you and increase the likelihood of an accident. If driving conditions demand it (such as bad weather, high traffic density, presence of children in the car, difficult road conditions), pull off the road and park before making or answering calls.
- Battery life may differ depending on personal habits.
- This appliance should be used in moderate climates.

### WARNING

- To prevent potential hearing damage, do not listen to high volume levels for long periods.
- Do not turn the volume up too high; doctors warn against prolonged exposure to high volumes.
- Stop using the product or lower the volume if you feel your ears ringing. Prolonged listening at high volumes could lead to hearing damage.

Life's too short for "ok". Too short to have stuff in our lives that's "ok, I guess". "But-I'm-almost home!" battery life. "But-it-only-fell-off-the-table" build quality. "Has-someone-stolen-the-bass?" sound quality. We say NO to "ok". In 2021, we set out to make stuff that's better in little ways that make a big difference. Stuff for people who expect more. Who want the songs to keep playing until they're home. Who are on a mission to stay up all night. Who want to know they'll feel great and look awesome, every day. For people who want every day to be a 'WoW' day.